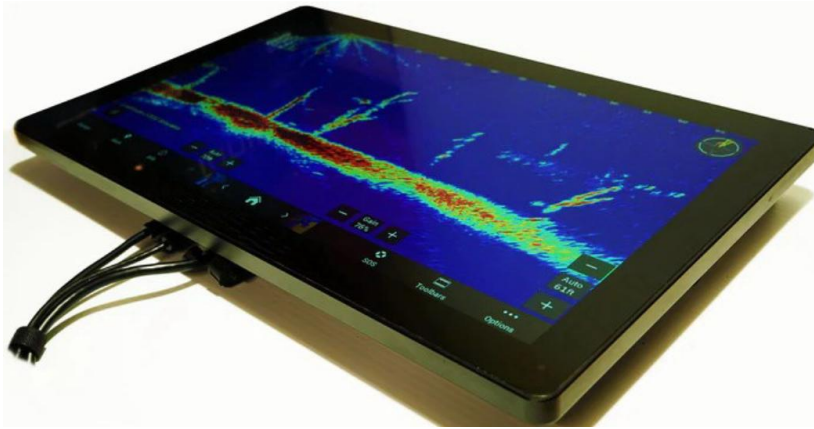


TDD-PTM-CF215WPM

21.5" Marine Waterproof Closed Frame PCAP Touch Monitors



Overview

The **TDD Touch Monitors** include **Standard, Industrial (Open Frame Bezel-free | Rear Mount, Panel Mount, Closed Frame), Outdoor, Waterproof, Stainless Steel, Marine, Curved, Desktop POS, Commercial Displays, Medical and Custom** types, delivers an industrial, reliable and cost-effective solution with outstanding image clarity & accurate touch response for OEMs & systems integrators. 7-98" sizes with rugged bezel, flat structure, high durability and versatility for Kiosks applications from Self-service, Automated Parking, Industrial Automation, Outdoor Control, Healthcare to Gaming.

Features

- Touch thru glass (**Sunlight Readable&Anti-mist Optical Bonding**) enabled with PCAP supports thickness up to 5mm
- Embedded design with **Rugged TFT Panel, Sturdy Aluminum Enclosure with bolting holes&gimbal side mount kit**
- **IP67 Fully Enclosed Fanless Design with M12 Metal I/O Connectors**, flexible mounting in any table, kiosk or cabinet

Specifications

Panel

Diagonal Size	21.5"(16:9), 55cm, Active matrix TFT LCD (LED)
Active Area (mm)	476.64 mm x 268.11 mm
Resolution	1920 x 1080
Viewing Angle	Horizontal: 89° or 178° total / Vertical: 89° or 178° total
Number of Colors	16.7 million
Brightness (typical)	1500 nits
Response Time-total	17 (Typ.)(G to G) ms
Contrast Ratio	1000:1
Input Video Frequency	Horizontal: 30 - 60 KHz / Vertical: 50 - 75 Hz

Touch

Touch Technology	PCAP (Projected Capacitive) - 10 Touch Capacity (Optional: Waterproof Firmware)
Surface Treatment	Water, Dust & Vandal proof; Optional: Anti-glare, Anti-fingerprint, Anti-smudge, Anti-bacterial
Supported OS	Windows / Android / Linux / Mac

Interfaces / Connectors / Controls

Video Interfaces	HDMI x1 / USB x1 for Touch; HDCP: Yes
Connectors & Controls	DC x1; LAN x1 & Remote Control (for OSD); Brightness Knob x1; On and Off Button x1

Power

Supply / Consumption: 100-240 VAC / 12VDC +/- 5%; 20W typical, 1.5W sleep, 0.5W off

Mechanical

Product Dimensions: 399.7 x 247x 50mm / Weight(Unpacked/Packed): 4.85 / 6.75kg
Box Dimensions: 480 x 170 x 350mm / VESA Mounting: 75 x 75 / 100 x 100mm

Environmental

Operating / Storage Temperature: **-20°C to 75°C (except for some models)**

Accessories

Power adapter/cable(4m), HDMI/USB cable(8m) w/ **type-c convert**, **gimbal mount kits (opt.)**

Others

MTBF / Warranty / Enclosure Color: 50,000 hours demonstrated / 1-year / black | silver
Ready for Use: 24/7; **Marine grade(moisture, salt spray & fungus proof for mainboard)**

* TDD (www.tddtouch.com, sales@tddtouch.com) reserves the right to change specifications without prior notice.